

Anti-H_ALPPL2 hlgG1 Reference Antibody (h12F3)

Product Information

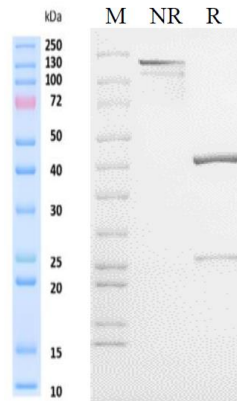
Product Name	Anti-H_ALPPL2 hlgG1 Reference Antibody (h12F3)
Storage temp.	Store at 2-8°C short term (1-2 weeks).Store at $\leq -20^{\circ}\text{C}$ long term. Avoid repeated freeze-thaw.
Catalog# / Size	GM-86291MAB-1mg / 1 mg GM-86291MAB-5mg / 5 mg GM-86291MAB-25mg / 25 mg GM-86291MAB-50mg / 50 mg GM-86291MAB-100mg / 100 mg

Antibody Information

Expression System	CHO
Aggregation	< 5% as determined by SEC-HPLC
Purity	> 95% as determined by SDS-PAGE
Endotoxin	< 1 EU/mg, determined by LAL gel clotting assay
Sterility	0.2 μm Filtered
Target	ALPPL2
Clone	h12F3
Alternative Names	ALP-1,ALPG,ALPPL, ALPPL2 PPBN
Source/Isotype	Monoclonal hlgG1 (KDEL), Kappa
Application	Bioactivity-ELISA、 Flow cytometry
Description	ALPPL2 (alkaline phosphatase, placental-like 2) is a gene that encodes alkaline phosphatase and belongs to the alkaline phosphatase family. The ALPPL2 gene is mainly expressed in the placenta and liver, and plays important physiological functions. Research has shown that ALPPL2 also plays a key role in the development of certain diseases such as osteoporosis, diabetes, and cancer. Therefore, ALPPL2 as an important gene holds significant significance in biomedical research and clinical diagnosis.
Formulation	phosphate-buffered solution, pH 7.4.

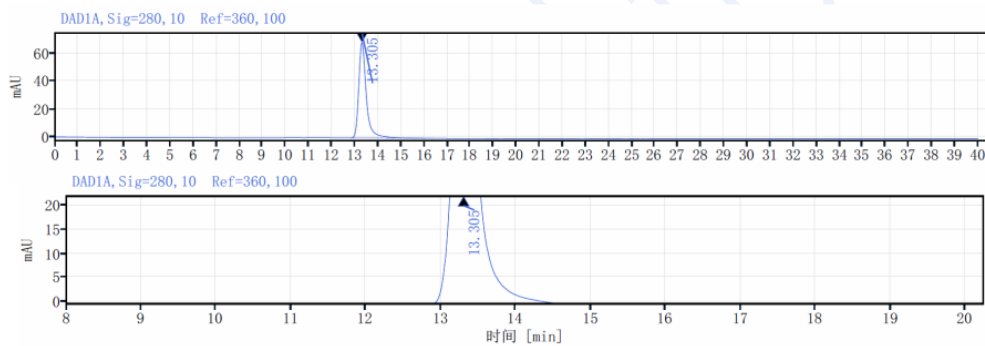
Data Examples

SDS-PAGE



On SDS-PAGE under reducing (R)/non-reducing(N-R) condition. The gel was stained overnight with Coomassie Blue. The purity of the protein is greater than 95%.

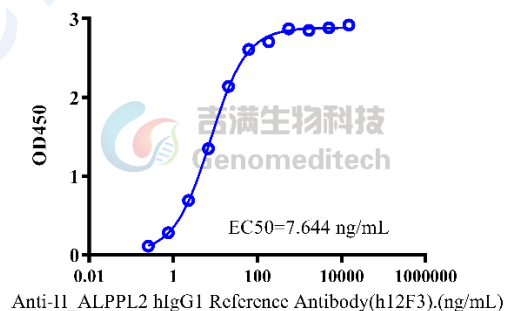
SEC-HPLC



The purity of this product is more than 95% verified by SEC-HPLC

Bioactivity-ELISA

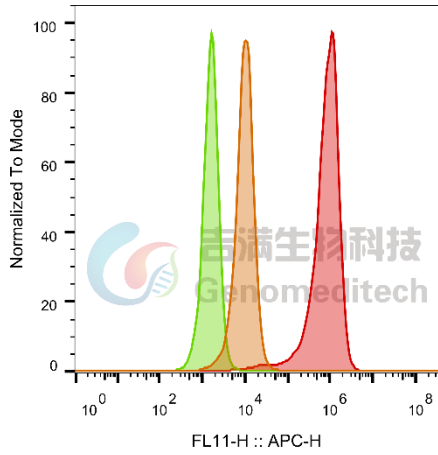
Anti-H_ALPPL2 hIgG1 Reference Antibody(h12F3), ELISA
 0.5 μ g Human ALPPL2 Protein; His Tag of per well



Human ALPPL2 Protein; His Tag (Catalog # GM-84414RP) was immobilized at 5 μ g/ml (100 μ L/well). Increasing concentrations of Anti-H_ALPPL2 hIgG1 Reference Antibody (h12F3) (Catalog # GM-86291MAB) were added.

Flow cytometry

H_ALPPL2(ALPG) HEK-293 Cell Line (Catalog # GM-C26399) was stained with Anti-H_ALPPL2 hlgG1 Reference Antibody (h12F3) (Catalog # GM-86291MAB) or isotype control antibody, followed by anti-Human IgG APC-conjugated Secondary Antibody.



SampleID	Geometric Mean : FL11-H
HEK-293 anti-ALPPL2+APC-2nd Ab	9657
HEK-293 H_ALPPL2 H_IgG+APC-2nd Ab	1569
HEK-293 H_ALPPL2 anti-ALPPL2+APC-2nd Ab	7.27E5

Fig. FACS